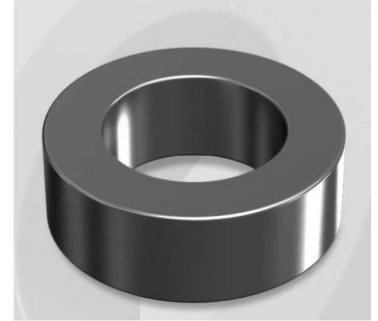


CH330060GTS

Electrical Characteristics

Material	Permeability (μ)	AL \pm 8% (nH/N ²)	DCB (% min) @ 100 Oe	Coreloss (mW/cm ² , max) @50kHz, 1000G
High Flux GTS	60	61	80.08	130

OD : 330G



Core Dimensions

Dimensions		Uncoated (Before)		Coated (After)		Color	Packaging
		(mm)	(inch)	(mm)	(inch)		
OD	(Max)	33.02	1.300	33.83	1.332	Black	Box Qty = 240pcs
ID	(min)	19.94	0.785	19.30	0.760		
HT	(max)	10.67	0.420	11.61	0.457		

Physical Characteristics

Cross Section (A)	Path Length (l)	Window Area (Wa)	Volume (V)	Breakdown Voltage (Vac)
0.672 cm ²	8.15 cm	2.93 cm ²	5.4768 cm ³	1,000
0.10416 in ²	3.209 in	578,251 cmil	0.3342 in ³	

Winding Information

0% Winding length/turn (cm)		
3.775		
40% winding factor Surface Area (cm ²)		
49.01		
40% Wound Di.(mm)		
OD	ID	HT
38.69	12.64	17.37

Typical DC Bias Performance

